

401/2-12 Glebe Point Road Glebe NSW

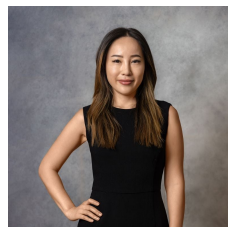
2  1 

Located on the 4th floor of the landmark 'University Hall' building opposite Victoria Park, this spacious unfurnished apartment offers a light filled floorplan and well-kept finishes throughout. The impressive security building boasts lift access, a residents' swimming pool, plus excellent proximity to the University of Sydney and UTS, bustling Broadway and boutique Glebe shops, eateries and entertainment venues. It is a perfect city-fringe haven or investment opportunity, delivering comfort and unbeatable lifestyle convenience with the added bonus of being remarkably quiet as it is located on the internal side of the building.

- Spacious main bedroom with built-ins
- Study area is 3.7m x 2.9m with built-in and access to bathroom

Type : Apartment

View : <https://www.recoproperty.com.au/8613964>



Boa Lee
02 8537 3377

[For full version visit the website](#)



LEVEL FOUR



GLEBE