

17/451 - 459 Glebe Point Road Glebe NSW

2  1  1 

Rarely does an opportunity arise to secure such a special residence on the tightly held Glebe Point peninsula. Set atop a bayside reserve within the exclusive Anchorage enclave, this apartment enjoys a stunning view over water to the Anzac Bridge, offering a lifestyle defined by light, outlook and convenience.

The spacious open-plan living and dining area is designed to maximise the flows seamlessly to a generous-size balcony - perfect for relaxing or entertaining. The apartment features two well-proportioned bedrooms, a designated study area and a full-size internal laundry.

Positioned within a secure, low-rise complex surrounded by

[For full version visit the website](#)

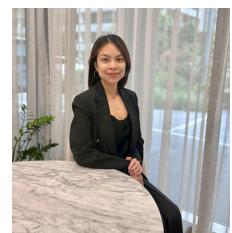
Type : Apartment

Price : \$1,425,000 - \$1,550,000

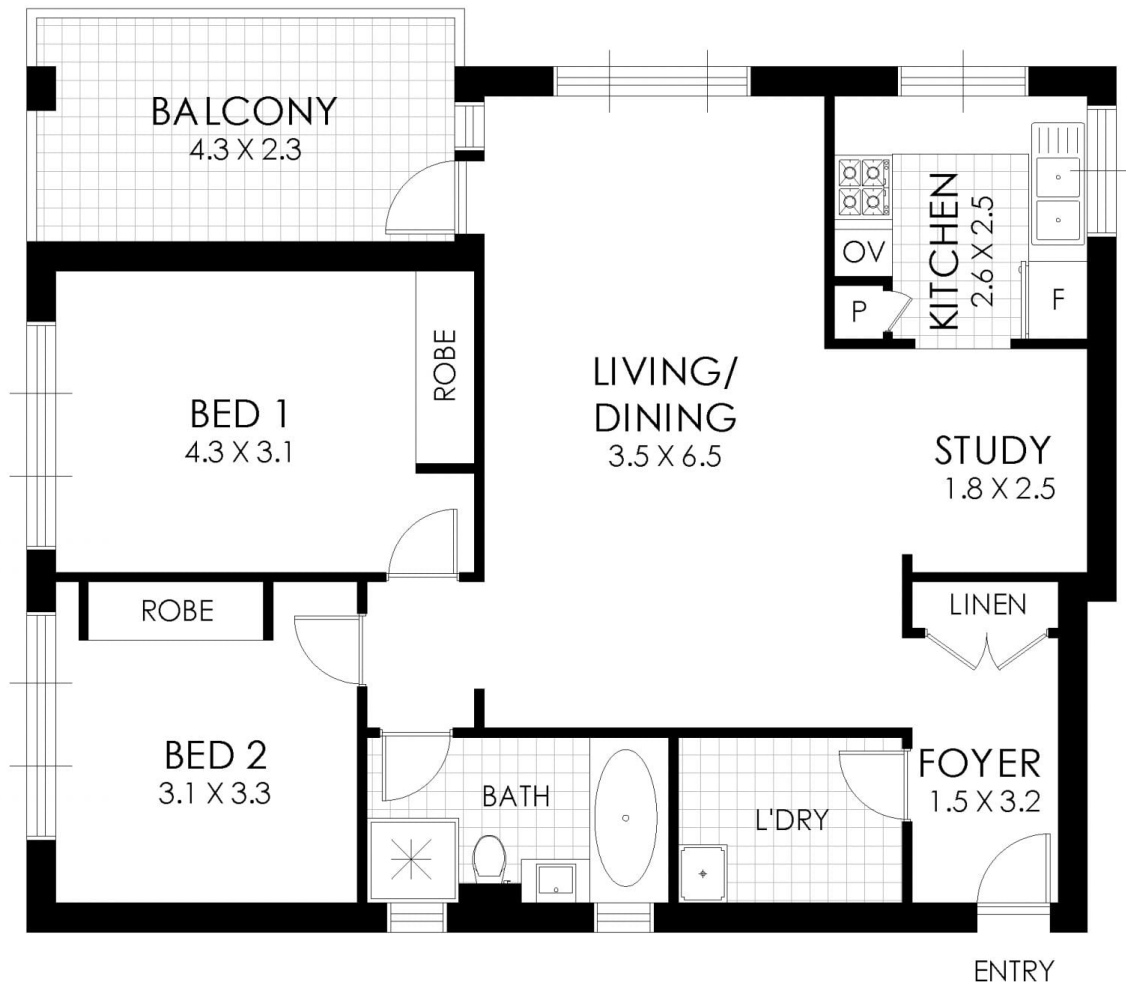
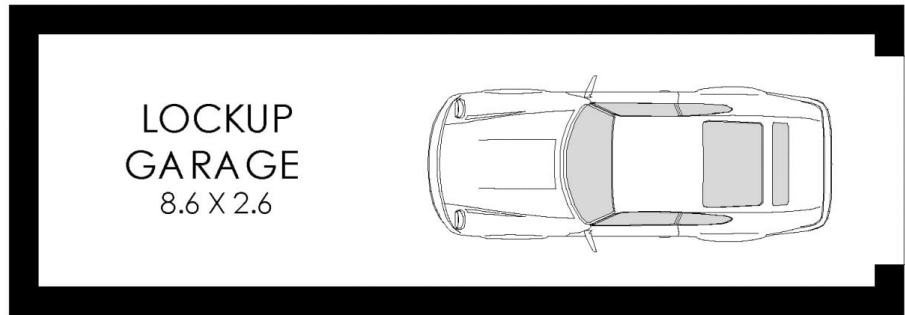
View : <https://www.recoproperty.com.au/8617960>



Junianto Lianto
02 8357 3377



Qiqi Huang
02 8357 3377



FLOOR PLAN

17/451 Glebe Point Road, Glebe



Disclaimer: Floor Plan measurements are approximate and are for illustrative purposes only. While we do not doubt the floor plans accuracy, we make no guarantee, warranty or representation as to the accuracy and completeness of the floor plan. You or your advisors should conduct a careful, independent investigation of the property to determine to your satisfaction as to the suitability of the property for your space requirements.