



12/29 Cook Street Glebe NSW

2  2  1 

Experience the ultimate in harbourside living with this stylish two-bedroom apartment in the prestigious Watermark complex, showcasing uninterrupted views of the City skyline, Anzac Bridge, and Blackwattle Bay.

Type : Apartment

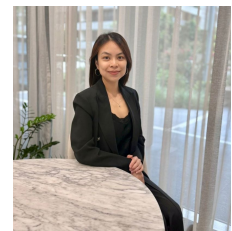
Price : \$1,550,000 - \$1,690,000

View : <https://www.recoproperty.com.au/8639313>

Perfectly positioned on the waterfront, this residence offers a seamless blend of tranquillity and convenience - just moments from Blackwattle Bay Ferry, the light rail, and scenic foreshore walks, while still being close to Glebe's vibrant café culture and the CBD.



Junianto Lianto
02 8357 3377

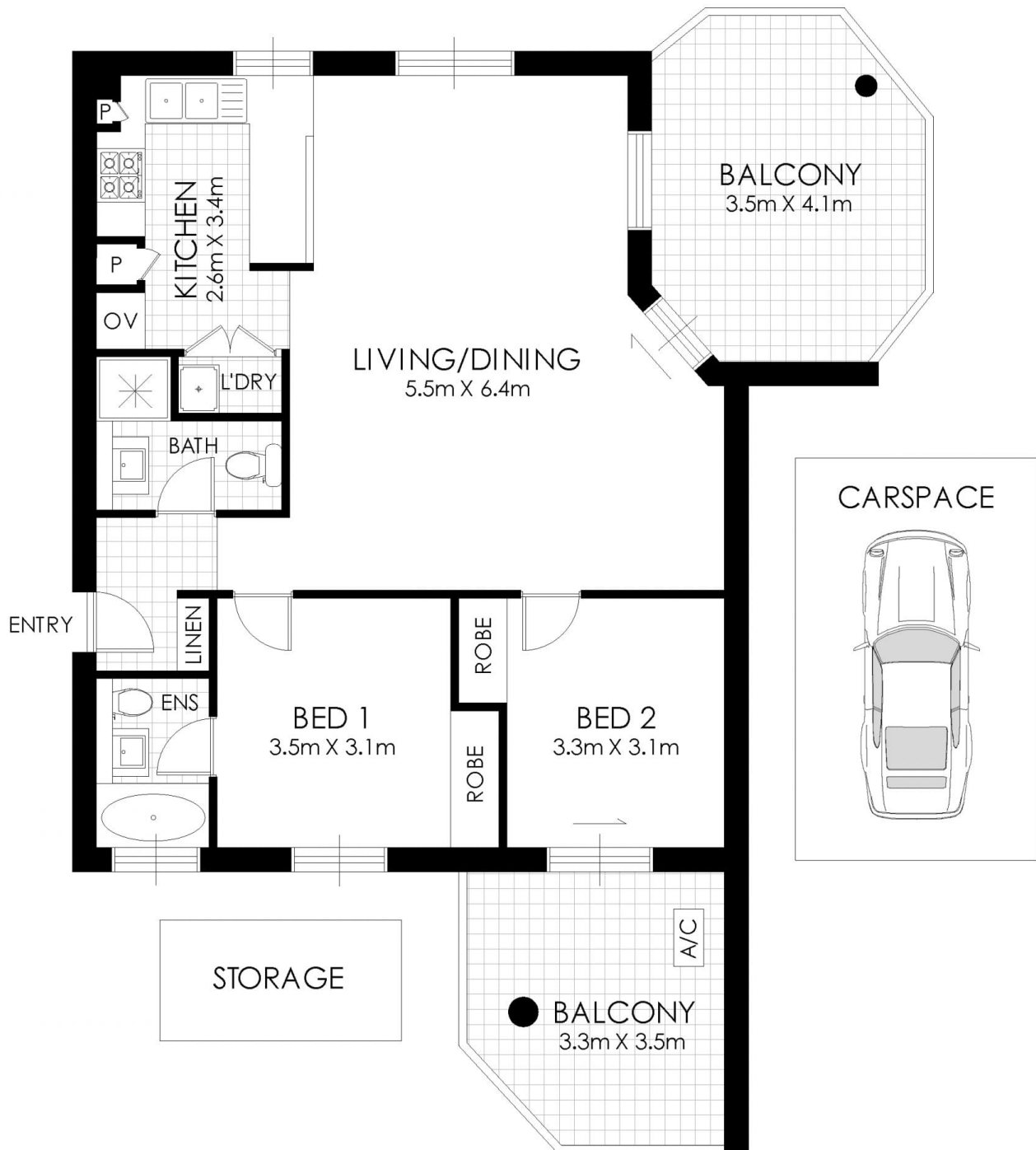


Qiqi Huang
02 8357 3377

Property Features:

- Bright open-plan living and dining areas flowing to a spacious waterfront balcony

[For full version visit the website](#)



FLOOR PLAN

12/29 Cook Street, Glebe



Disclaimer: Floor Plan measurements are approximate and are for illustrative purposes only. While we do not doubt the floor plans accuracy, we make no guarantee, warranty or representation as to the accuracy and completeness of the floor plan. You or your advisors should conduct a careful, independent investigation of the property to determine to your satisfaction as to the suitability of the property for your space requirements.